



SIL 4 "IM"- INTERLOCKING MANIFOLD FOR HIPPS SYSTEM

AVAILABLE CONFIGURATION
1oo1, 1oo2, 2oo3, 1oo4, DBB Configuration
IP66 St. St. or GRP Enclosure
With Proximity Switches

SIL 4 - IEC 61508

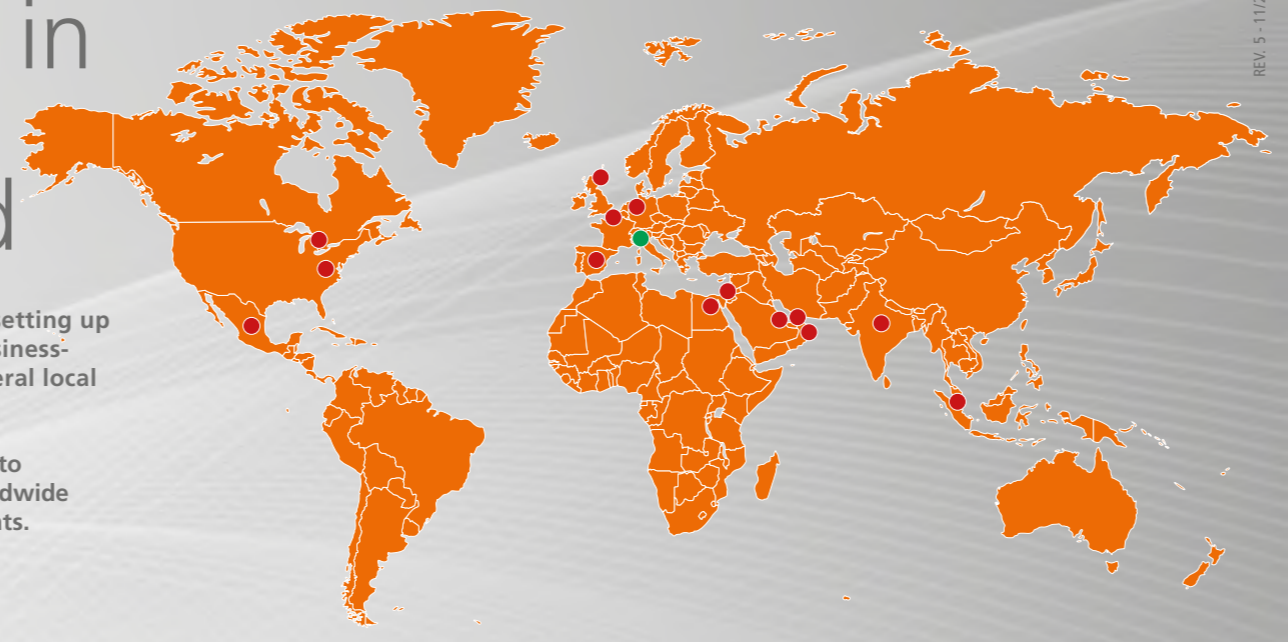


Indra in the world

Indra is currently setting up its world wide business-network with several local agents.

Check our website to find out Indra Worldwide Sales-net and Agents.

- Indra Warehouse
- Agents



REV. 5 - 11/2020

INDRA COMPANY

Set up in 1987 our Company is nowadays at the forefront in the designing and manufacturing of new concepts of instrumentation Valves: Manifolds, Monoflanges, SBB & DBB all in needle and ball design, strictly produced in accordance to the most stringent quality standards of safety and efficiency.

Our experience in the understanding of applications requirements, combined with our flexibility, allows us to develop customized solutions designed on customers' specific needs.

Our products are machined from the most standard materials but also from "exotic" materials used for critical applications (Duplex, Super Duplex, Monel...). Moreover, our valves production can be completed with complementary accessories, something that makes Indra a favourite and reliable partner for those companies that supply "packages" of various matching goods.

Our products are widely used in the Oil & Gas, Chemical, Petrochemical, Off-Shore, Energy and LNG, used as components of plants and

machineries with high commercial and technological value. Our headquarters is in Magenta – West of Milan – in a 4.000 sqm owned building, of which 3.000 sqm of production area.

Our Company is certified:
UNI EN ISO 9001:2015
UNI ISO 45001:2018
UNI EN ISO 14001:2015

INDRA INVESTMENTS

- INVESTMENTS**
Indra recently:
- expanded the area of the production department
 - built the bunker for high pressure testing
 - installed cryogenic test equipment

- OBJECTIVES**
- Increase of production capacity
 - Greater competitiveness in delivery
 - Development of new markets



BALL & DBB SPLIT BODY FLOATING, TRUNNION & ACTUATED VALVES

- ASME Class – 150lb to 2500lb
- API 3000 / 5000 / 10000 / 15000
- Size – 1/2" to 8" (FB & RB)
- Soft Seated & Metal Seated
- Lever, Gearbox or Actuated
- Temperature Range -46°C to +240°C
- Special HT versions up to 500°C
- Cryogenic versions



INTEGRAL ONE PIECE FLOATING BALL & DBB VALVES

CONNECTIONS

From 1/2" to 2"
Threaded
Flanged
Welded (BW or SW)
Hub

RATING

ASME Class – 150lb to 2500lb
API 3000 / 5000 / 10000 / 15000

DESIGN

Single or Double Block and Bleed
(SB-SBB-DB-DBB)
Integral Ball Design: Soft & Metal Seat

BONNET

- Screwed
- O.S.&Y. Bolted
- Antitamper
- Extended Locking device
- Cryogenic service

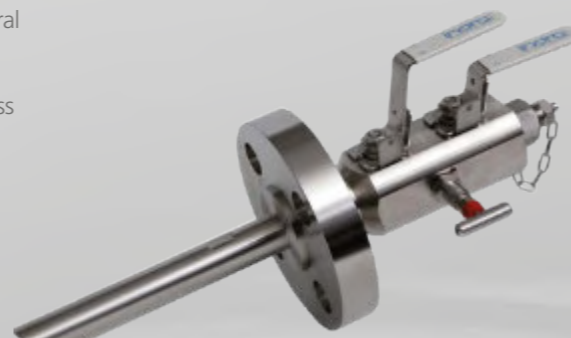


SAMPLING & INJECTION DBB VALVES

Sampling DBB valves are used for sampling - injection purposes and further analysis of the process. The valves are designed both with integral body and sampling probe (not welded). Probe length is defined in accordance to the application requirements and the pipe line diameter. Indra can provide the Wake frequency calculation and the Bending stress calculation to ensure both the correctness of the selected probe length and the valve optimal performance over time.

The advantages of sampling valves are:

- Cost reduction
- Installation times reduction
- Weight reduction
- Exclusion of additional mounting accessories
- Exclusion of leakage points



INSTRUMENTATION VALVES & MANIFOLDS

CONNECTIONS

From 1/2" to 2"
NPT, BSPP, BSPT, BW, SW
Autoclave*

RATING

6000 / 10000 / 15000* PSI (threaded types)
SCH. 40, 80, 160, XXS (BW-SW version)

BONNET

- Screwed; O.S.&Y. Bolted; Antitamper;
- Extended Locking device; Cryogenic service



MONOFLANGE VALVES – SLIM LINE SB - SBB - DB - DBB

CONNECTIONS

Inlet: 1/2" to 4" flanged
Outlet: Threaded & Flanged

RATING

ASME Class – 150lb to 2500lb
API 3000 / 5000 / 10000 / 15000

BONNET

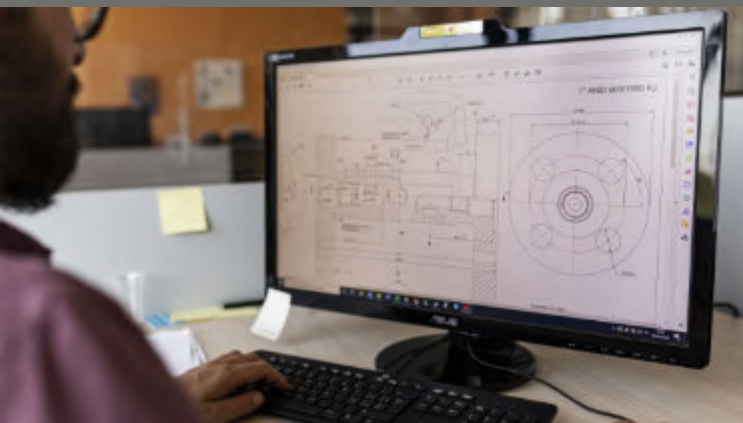
- Screwed
- O.S.&Y. Bolted
- Antitamper
- Extended Locking device
- Cryogenic service



CUSTOMIZED CONFIGURATION



Engineering



Manufacturing



Machining



3D Checking



NDT Testing



Bunker "High Pressure Test"



100% Pressure Testing

